



**Ask the Boy  
who owns a  
KEYSTONE**



Built by the

KEYSTONE MANUFACTURING COMPANY BOSTON, MASS., U.S.

# KEYSTONE

## PACKARD MOTOR CAR COMPANY

DETROIT MICHIGAN

May 2, 1925

Keystone Manufacturing Company  
288 A Street  
Boston, Massachusetts

Gentlemen:

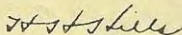
The toy Packard truck that you have sent us is indeed a fine piece of work. You have shown skill as a toy designer and you have built well.

These toys will go to many boys whose fathers have fleets of Packard trucks, and to many more who ride in Packard cars as a part of their daily life. How proud they will be of this closer contact with a thing they have come to know so favorably.

We wish you success in marketing the toy, and we wish the boy owners joy in their possession.

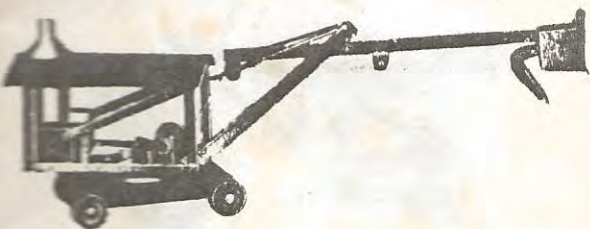
Very sincerely,

PACKARD MOTOR CAR COMPANY



H. H. Hills  
Vice President of Distribution

# KEYSTONE



Height, 14½ inches

Length, 34½ inches

Length when arm is extended, 34½ inches

## No. 47 KEYSTONE STEAM SHOVEL WITH EXTENSION ARM

Price \$4.50

**AN EXCLUSIVE FEATURE.** After the scoop has picked up the sand and is raised to a horizontal position, the extra extension operates by further cranking the handle which causes the cable to pull out the extra extension as in a real working steam shovel. The scoop has a trap door that will lock automatically as it drops to the sand pile. The entire steam shovel pivots on a large base that does not wobble.

This steam shovel has an extra long 10-inch wheel base.

New automatic ratchet stop with spring.

It also has a winding drum in the housing that holds and guides the cable. Cable travels on pulleys.

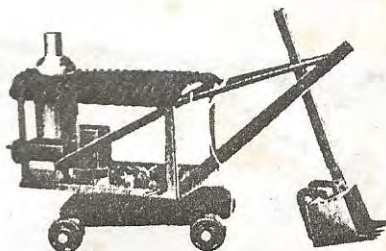
Shovel scoop has double ribbed teeth. The scoop has less parts giving more strength. The scoop also has an improved automatic locking arrangement on the trap door.

The Keystone Steam Shovel is spot welded and riveted throughout. The finish is enameled red and black baked to a very high temperature giving it perfect and lasting lustre.

Weight when packed for shipment in a Mullen test corrugated carton, 11 lbs.



# KEYSTONE



Height, 13 $\frac{1}{2}$  inches  
Length, 20 $\frac{3}{4}$  inches  
Length when arm is raised, 26 inches

## No. 46 STEAM SHOVEL

Price \$3.00.

**T**HIS special Steam Shovel is of the same construction and quality as the No. 47 Steam Shovel excepting that it is not built with our exclusive and patented extension arm feature.

The operation is the same excepting that the arm does not go forward after it is raised.

Weight when packed for shipment in a Mullen test corrugated carton, 10 lbs.





# KEYSTONE

Height, 10½ inches  
Length, 26 ⅞ inches



**LIFTING CRANK  
OPERATES FROM  
THE FRONT**

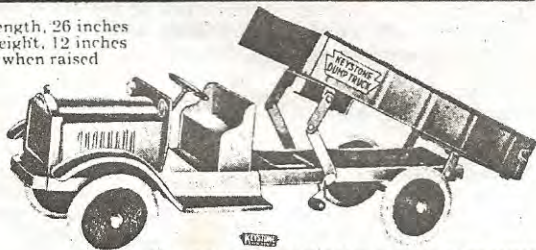
## **No. 41 KEYSTONE DUMP TRUCK** Price \$5.75

**L**IFTING power of great strength operated by a crank at the front of the car. Load holds at any location without any adjustment. Crank handle folds up out of the way. Crank arrangement will lift heavy load without exertion.

Tail board has snap catches. Tail board also has a chute so that if the boy does not desire to swing the tail board down he can regulate the unloading with a separate chute giving the boy considerably more actual play.

Protruding Nickeled Head Lights, Solid Rubber Balloon Tires, body ribbed throughout, "Stop" and "Go" Signals, Radiator Cap. Weight when packed for shipment in a Mullen test corrugated carton, 15 lbs.

Length, 26 inches  
Height, 12 inches  
when raised



## **No. 39 KEYSTONE DUMP TRUCK** Price \$4.50

**T**HIS Truck will hold 250 pounds. Lifting lever is on the side. Will sustain a heavy load when lifted. Equipped with solid rubber tire disc wheels, nickeled headlights, radiator cap. Ribbed body throughout. Finished in bright snappy colors.

Weight when packed for shipment in a Mullen test corrugated carton, 13 pounds.

# KEYSTONE



Length, 20 $\frac{1}{4}$  inches  
Height, 17 $\frac{3}{4}$  inches

## No. 44 KEYSTONE TRUCK LOADER

Price \$5.25

**E**VERY boy having a dump truck or any open body truck will want to play with a Truck Loader wherever there are pebbles, dirt, sand, etc.

All complications have been omitted from this Truck Loader.

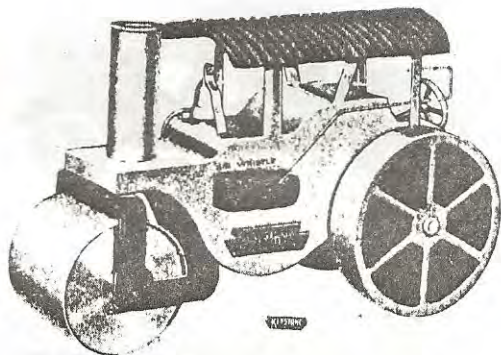
Mounted on a four-wheel heavy base. Baked, dipped enamel endless chain with a series of grab buckets geared to a crank so as to give more power to the chain. The material when lifted is thrown down a chute. Enameled in olive drab, red and black colors

Weight when packed for shipment in a Mullen test corrugated carton, 12 lbs.



# KEYSTONE

EQUIPPED WITH LOUD AIR WHISTLE!



Length, 20 inches  
Height, 12 $\frac{1}{2}$  inches

## No. 60 KEYSTONE STEAM ROLLER

Price \$6.50

**R**IGIDLY constructed boiler body. Extra heavy roller and well proportioned wheels. Steering wheel in the rear will steer the steam roller. Boy can sit on top of roof and steer the steam roller. Equipped with loud air pressure whistle operated from side, also with loud ringing brass bell. This Steam Roller will sustain a weight of about 150 pounds.

It is a brand new toy and undoubtedly will be one of our best sellers.

Weight when packed for shipment in a Mullen test corrugated carton, 11 pounds.



# KEYSTONE

## No. 78 KEYSTONE WRECKING CAR

Price \$7.00

Length, 27 inches  
Height, 22 $\frac{3}{4}$  inches  
when crane is lifted



A desirable addition to all relative size toy vehicles. Lifting crane that swings around on a turn table and will lift considerable weight, whether it be toy trucks or other articles. A great amount of play can be had with this number. Articles can be placed in the body of the truck. Polished brass rails extend all the way to the bottom of the back step. Crane equipped with nickeled lifting hook and heavy rope, nickeled crank gears, folding crank. Solid rubber tires, protruding nickeled head lights, radiator cap, new style nickeled hub caps, etc. Weight 16 lbs.

## Leather Bound Mail Bags



Length, 26 $\frac{1}{4}$  inches  
Height, 11 $\frac{1}{2}$  inches

## No. 45 KEYSTONE U. S. MAIL TRUCK

Price \$6.75

COVERED body with heavy grill work. The grill work enables the boy to show the load he has, giving it better play than a closed body. The words "U. S. Mail" gives the play more significance.

A real substantial lock with key for the rear doors. Rear doors are tight fitting. Each truck equipped with leather bound Mail Bags.

This truck is enameled olive drab green body as is used by the United States Government.

Weight when packed for shipment 17 lbs.



# KEYSTONE

Length, 26  $\frac{1}{8}$  inches  
Height, 11  $\frac{1}{2}$  inches



**No. 48 KEYSTONE U. S. ARMY TRUCK**

Price \$6.00

**A**RM Y trucks stand out very vividly in the youngster's mind. The above Army Truck has the correct color scheme and is correct in detail.

The canvas hood made of exceptionally heavy canvas with brass grommets fits snug over the steel framework of this Army Truck. When the canvas hood is off the youngster can still pile varied articles above the height of the framework.

Protruding Head Lamps, Solid Rubber Tire Wheels, Radiator Cap—all in correct proportion and design.

Weight when packed for shipment 15 lbs.

Length, 27  $\frac{1}{2}$  inches  
Height, 11  $\frac{1}{2}$  inches



**No. 73 AMBULANCE**

Price \$7.50

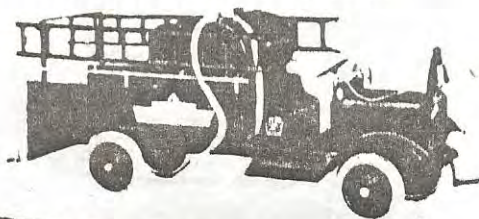
**E**QUIPPED on both sides with khaki canvas curtains that can be rolled up and fastened. Can be rolled down again and secured by regular automobile snap fasteners. Canvas curtain in the rear. White flag with green cross that may be attached to side of the chauffeur's hood. Has back step with polished brass rails. Weight 17 lbs.



# KEYSTONE

**SHOOTS WATER! REAL AIR PUMP!**

**"Lift the Hood and see the Motor"**



Length, 27½ inches  
Height, 10¾ inches

**No. 57 KEYSTONE CHEMICAL PUMP ENGINE,**

**Price \$10.50**

**Real Pressure Pump** is under the motor hood operated by turning the crank.

**Real Rubber Hose** with brass nozzle.

**Extension Ladders** that can be joined together and attached to the back so that it will attain a height of 5½ feet.

**Brass Railings** along the sides of truck to the back step.

**Baked Red Enamel.**

**Water Tank** with brass connections and plenty of storage for water. Size of tank 4¼ in. diameter x 7 in. long.

**Swinging Brass Bell** that rings loud and clear.

**Solid Rubber Balloon Tires.**

**"Siren" Noisemaker** cricket type.

**Nickel Hub Caps, Nickel Lamps with Lens, Motor Hood and Radiator** in perfect proportion.

Weight when packed for shipment 19 lbs.



# KEYSTONE

**SHOOTS WATER! REAL AIR PUMP  
LIFT THE HOOD AND SEE THE "MOTOR"**

## **No. 56 KEYSTONE WATER PUMP TOWER**

**Price \$13.50**

The Tower can be raised and stopped at any angle up to an upright position by turning the crank wheel.

Real Air Pressure Pump is under the motor hood and is operated by turning the front crank.

The Motor Hood can be raised and the "motor" inspected just like any other truck.

Water Tank with plenty of water storage.

Size of tank  $4\frac{1}{4}$  in. diameter x 7 in. long.

Mechanism for raising the tower.

"Siren" Noisemaker cricket type.

"Up and Down" nozzle lever.

"Left and Right" nozzle lever.

Ladders, one on each side hanging on brackets.

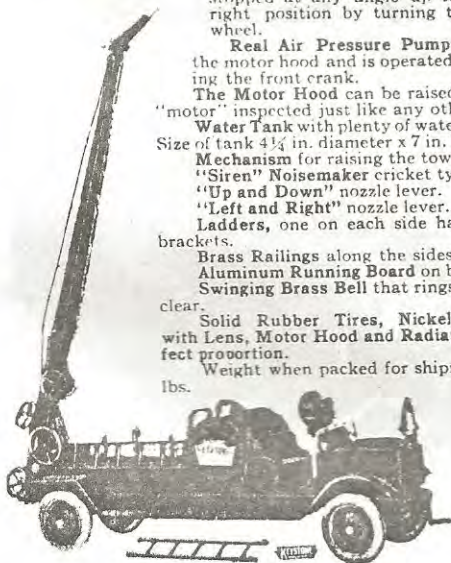
Brass Railings along the sides of truck.

Aluminum Running Board on both sides.

Swinging Brass Bell that rings loud and clear.

Solid Rubber Tires, Nickered Lamps with Lens, Motor Hood and Radiator in perfect proportion.

Weight when packed for shipment  $21\frac{1}{2}$  lbs.



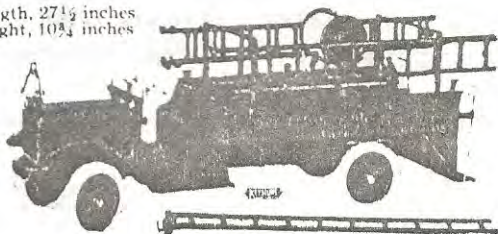
Length, 29 inches

Height, 41 inches when raised



# KEYSTONE

Length, 27½ inches  
Height, 10½ inches



## No. 49 KEYSTONE FIRE TRUCK

Price \$8.00

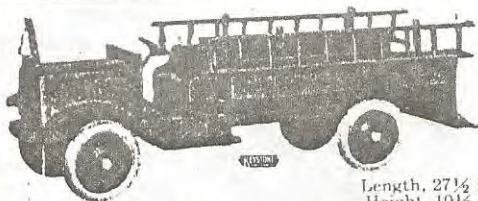
**E**QUIPPED with four extension ladders. Extra large hose reel. This reel is equipped with 20 ft. of non-curling hose cord with a heavy brass screw machined nozzle and coupling.

A large shiny swinging bell is fastened to the radiator with cord for ringing.

Has brass railing in front of the driver's seat also along the full length of both sides and down to the rear standing step.

Bracket on rear foot step allows the clamping and extending of the ladder 5 ft. 6 inches high.

Weight when packed for shipment 17 lbs.



Length, 27½ inches  
Height, 10½ inches

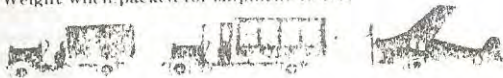
## No. 52 KEYSTONE FIRE TRUCK

Price \$6.25

**E**QUIPPED with two extension ladders. A large shiny brass swinging bell is fastened to the radiator with cord for ringing.

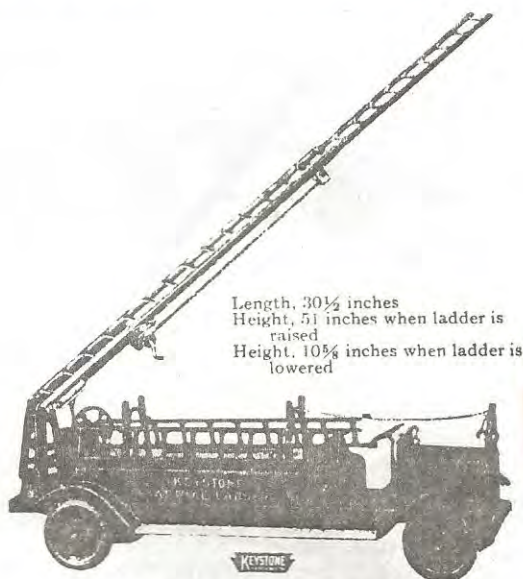
It has a Rear Step, Nickeled Wheel Hubs, Solid Rubber Balloon Tires, Protruding Nickeled Headlights.

Weight when packed for shipment 15 lbs.





# KEYSTONE



Length,  $30\frac{1}{2}$  inches  
Height, 51 inches when ladder is raised  
Height,  $10\frac{5}{8}$  inches when ladder is lowered

## No. 79 KEYSTONE AERIAL LADDER

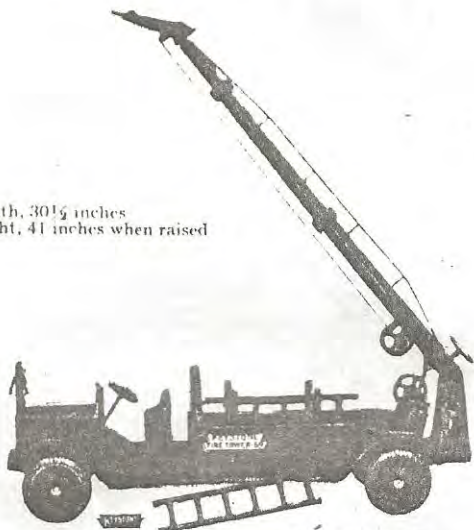
Price \$10.50

CHAIN drive mechanism extending heavy nickel-plated ladders to a height of 51 inches. Turn table that revolves the ladder mechanism. Equipped with extra ladders that may be connected to different lengths. Body of truck so constructed to carry many articles. Swinging loud brass bell. Aluminum covered running board. Solid rubber tire wheels. Protruding nickeled head lights, new style nickeled hub caps. Length of chassis  $30\frac{1}{2}$  inches. Weight when packed for shipment in Mullen test corrugated carton, 21 pounds.



# KEYSTONE

Length, 30½ inches  
Height, 41 inches when raised



## No. 59 KEYSTONE FIRE TOWER

Price \$10.00

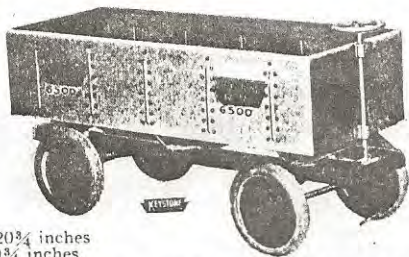
THIS Tower is the same as No. 56 Water Pump Tower excepting that it is not equipped with the pumping mechanism, and will not shoot water. There is, however, a larger space in the body of the truck in which to put articles.

By turning the crank wheel the tower can be raised or stopped at any angle up to an upright position. Has a wheel to turn the nozzle up or down. Has a wheel to turn the nozzle left or right. Ladders on each side hang on brackets. Brass railings along side of truck. Aluminum running board on both sides. Swinging brass bell that rings loud and clear. Solid rubber tires. Nickered head lamps.

Weight when packed for shipment in a Mullen test corrugated carton, 21 pounds.



# KEYSTONE



Length, 20 $\frac{3}{4}$  inches  
Height, 9 $\frac{3}{4}$  inches

## No. 6500 KEYSTONE FREIGHT CAR

Price \$4.50

**G**ONDOLA type freight car with sectional design. Steering wheel so that it may be played with and steered separately. Will hold considerable materials. Solid rubber tires that will not mar varnished floors. Can be connected with locomotive or extra equipment. Body finished in baked black enamel, chassis and wheels finished in red. Length 20 $\frac{3}{4}$  inches, height 9 $\frac{3}{4}$  inches.

Weight when packed for shipment in Mullen test corrugated carton, 12 lbs.



Length, 20 $\frac{3}{4}$  inches  
Height, 23 inches  
when raised

## No. 6600 KEYSTONE RAILROAD WRECKER

Price \$5.50

**C**AN be used as equipment in connection with the Locomotive or the Freight Car. Has lifting crane that swings around. Will lift considerable weight without effort on part of boy. Crank equipped with nicked lifting hook and heavy rope, nicked crank gears, folding crank handle. Body made so that articles when lifted on platform will not fall off. Solid rubber tires. Weight when packed for shipment in a Mullen test corrugated carton, 11 lbs.

# KEYSTONE



Length, 37 inches with skids on  
26 inches without skids  
Height, 9 inches

## No. 54 KEYSTONE KOASTER TRUCK

Price \$5.50

**WE** HAVE so constructed the **KOASTER TRUCK** that not only can a child ride comfortably but can put it to many other uses. It can be used with skids, hoist cable, windlass, same as is used by safe movers, heavy machinery movers, etc.

**Solid Rubber Balloon Tires.**

**Windlass** on truck is finely finished, in color with nickel trimmings.

**Nickeled Geared Mechanism** operates the windlass.

**Heavy Hoist Rope** with steel Hook is furnished on windlass.

**Heavy Platform Body** nicely finished in red.

**Two Heavy Skids.**

**Hooks for Tying Down Load** same as on real trucks.

**Nickeled Hub Caps, Nickeled Lamps, Motor Hood and Radiator** in perfect proportions.

Weight when packed for shipment 13 lbs.



Length, 26 inches  
Height, 9 inches

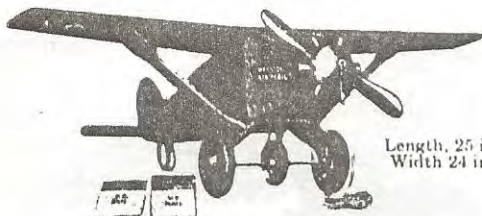
## No. 55 KEYSTONE KOASTER TRUCK

Price \$5.00

**T**HE tendency of children is to try to ride on all the various models of **KEYSTONE TRUCKS**. The above illustrated **KOASTER TRUCK** allows this added feature to this class of goods. Specifications same as No. 54 except no Windlass or Skids.



# KEYSTONE



Length, 25 inches  
Width 24 inches

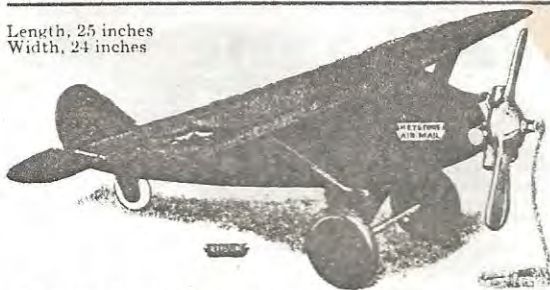
## No. 263 KEYSTONE MAIL PLANE

Price \$3.50

**H**AS aviator's cabin in which to place articles. Equipped with leather bound mail bags. Swinging door on aviator's cabin. Plane will sustain weight of about 150 pounds. Nickel plated propeller. Circular type of aeroplane motor cylinders behind propeller. Makes clinking motor noise when pulled along the ground. Solid rubber tires on disc wheels. No sharp edges on tail and rudder or any other part of plane. Has landing wheel. Has pull rope. A high grade Keystone finish of snappy colors.

Weight when packed for shipment in a Mullen test corrugated carton, 6½ pounds.

Length, 25 inches  
Width, 24 inches



## No. 265 KEYSTONE MAIL PLANE

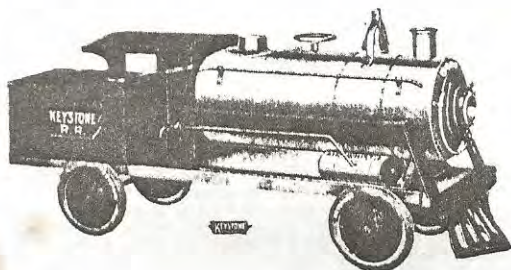
Price \$2.50

**T**HIS Plane made strong enough to sustain a weight of about 150 pounds. Has circular type of aeroplane motor cylinders behind propeller. Propeller of heavy steel baked in enamel. Makes clinking motor noise when pulled along the ground. Windows on both sides. Solid rubber tires on disc wheels. No sharp edges on tail and rudder or any other part of plane. Has landing wheel. Has pull ropes.

Weight when packed for shipment in a Mullen test corrugated carton, 6 lbs.

# KEYSTONE

EQUIPPED WITH LOUD AIR WHISTLE DEVICE



Length, 28 inches  
Height, 12½ inches

## No. 6400 KEYSTONE LOCOMOTIVE

Price \$8.75

CONSTRUCTED of heavy steel so that a youngster can steer it while sitting on it and play with it indoors and outdoors without tracks. Space provided in the coal tender to pile articles. Solid rubber tire wheels that will not mar varnished floors. Baked in red and black enamel. Loud-ringing polished brass bell, polished brass steam dome, polished brass railing. Coupling pin can connect locomotive with freight cars on page 17.

Equipped with loud air whistle device operated from Engineers Cab.

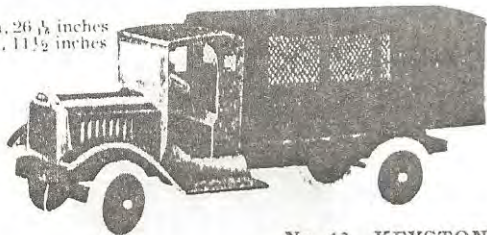
A locomotive that will hold upwards of 200 pounds and can be played with in many ways. Length 28 inches, height 12½ inches.

Weight when packed for shipment in Mullen test corrugated carton, 16½ lbs.



# KEYSTONE

Length, 26  $\frac{1}{8}$  inches  
Height, 11  $\frac{1}{2}$  inches



**No. 43 KEYSTONE  
AMERICAN RAILWAY  
EXPRESS**

Price \$6.25

**C**OVERED body with heavy grill work. The grill work enables the boy to show the load, giving it better play than fully enclosed body truck. The words "American Railway Express" gives the play more significance. A real substantial lock with key for the rear doors. Rear doors are tight fitting. Reinforced hood prevents cave in. Solid Rubber Balloon Tires, "Stop" and "Go" Signals, Protruding Nickeled Lamps, Radiator Caps, Full Swing-ing Doors. Weight when packed for shipment 17 lbs.

Height  
10  $\frac{1}{2}$  inches

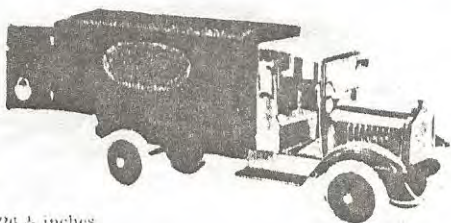


**No. 53 KEYSTONE  
SPRINKLER TANK**

Price \$6.75

**T**HE tank on the Keystone chassis is extra large measuring 5  $\frac{1}{4}$  inches by 12 inches. The inlet at the top has a nicely made cover. The water actually sprays and not just drips down. The tank is absolutely water tight and will hold 4 quarts of water. A large brass valve faucet is securely fastened with lock nut inside so that it will not turn and loosen. Our improved sprinkling arrangement in a very simple manner hooks on to the back of the chassis. It is made of heavy perforated curved brass tube with enameled green steel hangers. The faucet and sprinkler is connected with a rubber hose of pure gum. Solid Rubber Balloon Tires. Weight when packed for shipment 16 lbs.

# KEYSTONE



Length, 26  $\frac{1}{4}$  inches  
Height, 11  $\frac{1}{2}$  inches

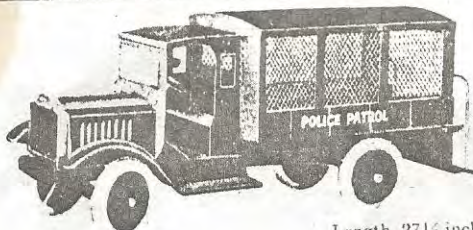
## No. 58 KEYSTONE MOVING VAN

Price \$6.25

**C**OVERED body truck in very elaborate red color made to appear like the moving vans now appearing on the street.

A real substantial lock with key for the full paneled doors in the rear. Plenty of room for sister's doll house furniture and almost anything else.

Weight when packed for shipment 18 lbs.



Length, 27  $\frac{1}{2}$  inches  
Height, 11  $\frac{1}{2}$  inches

## No. 51 KEYSTONE POLICE PATROL

Price \$6.50

**T**HE Keystone Police Patrol is in construction and design practically the same as is used by the Police Departments in most American cities. It has two full length seats on the inside of the car. Brass railing and foot step in the rear.

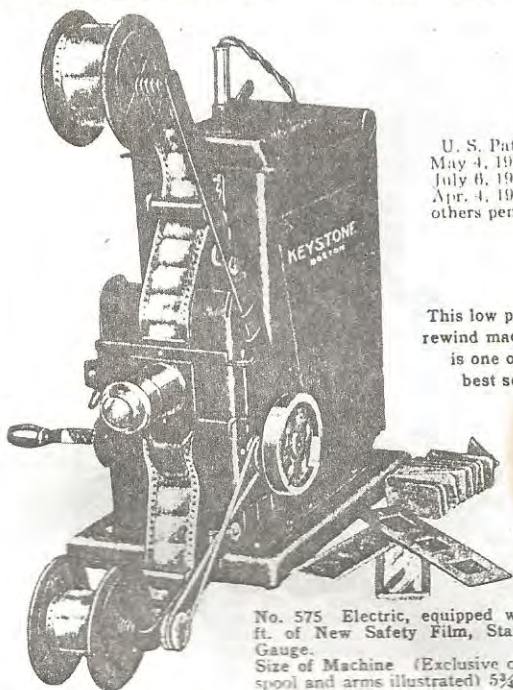
Weight when packed for shipment 18 lbs.





# KEYSTONE MOVIEGRAPH—

# SHOWS REAL MOVIES



U. S. Patents  
May 4, 1920  
July 6, 1920  
Apr. 4, 1922  
others pending,

This low priced  
rewind machine  
is one of our  
best sellers

**No. 575 Electric**, equipped with 4 ft. of New Safety Film, Standard Gauge.

**Size of Machine** (Exclusive of film spool and arms illustrated)  $5\frac{3}{4}$  in. x  $9\frac{1}{2}$  in. x  $11\frac{1}{2}$  in.

**Additional Equipment** Socket and six feet of cord with plug. One Compartment Slide, one Colored Slide, one U-Draw-Em Slide, supply of tickets, bill posters, operator's badge and officer's and ticket takers' badges, ushers' arm bands and a sheet of simple instructions.

**Construction** Steel. Painted black of a high grade crystal finish. Base has rubber tips so that it will not scratch furniture.

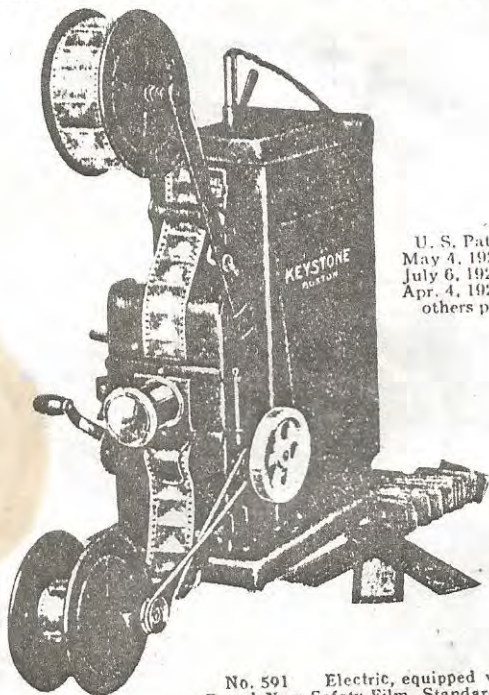
**Size of Picture** 36 inches x 48 inches. The larger the bulb the further back from the wall the machine can be placed, resulting in a larger picture.

The above model can also be had for Dry Cell Batteries. Be sure to specify the number and whether for Electric or Dry cell. Electric models furnished unless otherwise specified. Batteries not furnished with dry cell machines.

**Weight** Packed each in a strong box complete,  $6\frac{3}{4}$  pounds.

# KEYSTONE MOVIEGRAPH—

# REAL FUN AT HOME



U. S. Patents  
May 4, 1920  
July 6, 1920  
Apr. 4, 1922  
others pending

**No. 591** Electric, equipped with 6 ft.  
Brand New Safety Film, Standard Gauge.

**Size of Machine** 5 $\frac{3}{4}$  in. x 9 $\frac{1}{4}$  in. x 12 $\frac{5}{8}$  in.  
Exclusive of spools and arms illustrated.

**Equipment** Six feet of cord, plug and socket, one compartment slide, one colored slide, one U-Draw-Em slide, generous supply of tickets, bill posters, officers' badges, operators' and ticket takers' badges, ushers' arm bands, and a sheet of simple instructions.

**Construction** Steel. Leather pattern, baked crystalized enamel finish. Nickel trimmings. Base has rubber tips so it will not scratch furniture.

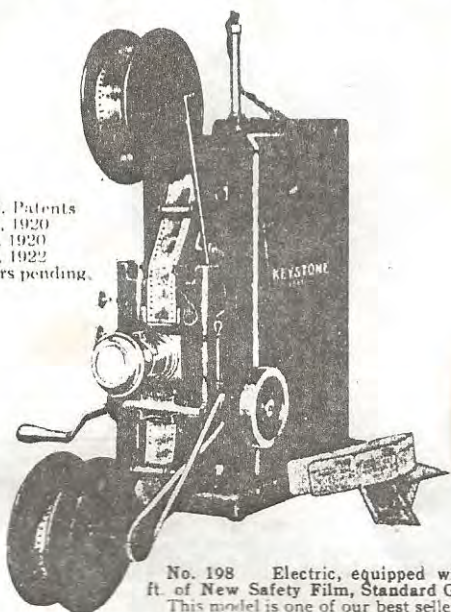
**Size of picture** 38 inches x 50 inches. Any ordinary Electric bulb can be used, the larger the bulb the further back from the wall the machine can be placed, resulting in a larger picture.

**Weight** Packed each in a strong box complete, 7 $\frac{3}{4}$  lbs.

**Retail Price, \$7.50**

# KEYSTONE MOVIEGRAPH— FOR BOYS AND GIRLS

U. S. Patents  
May 4, 1920  
July 6, 1920  
Apr. 4, 1922  
others pending.



**No. 198** Electric, equipped with 10 ft. of New Safety Film, Standard Gauge. This model is one of our best sellers.  
**Size of Machine**  $6\frac{3}{4}$  in. x  $10\frac{3}{4}$  in. x  $13\frac{1}{2}$  in.

Exclusive of spools and arms illustrated.

**Additional Equipment** Adjuster for electric bulb, including six feet of cord, plug and socket, one compartment slide, one U-Draw-Em slide, two colored slides, generous supply of tickets, bill posters, officers' badges, operators' and ticket takers' badges, ushers' arm bands, and a sheet of simple instructions.

**Construction** Steel. Leather pattern, baked crystalized enamel finish Nickel trimmings. Base has rubber tabs on the bottom so that it will not scratch the furniture.

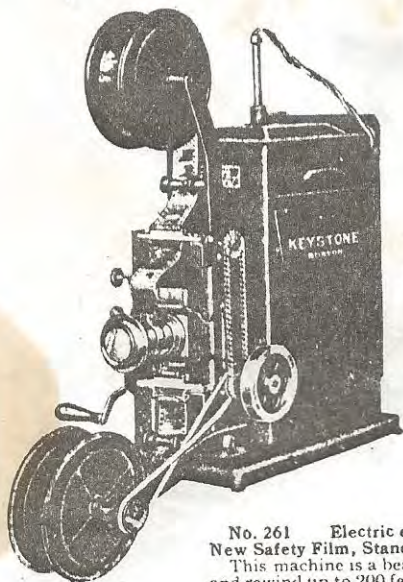
**Size of Picture** 45 inches x 60 inches. Any size bulb can be used up to 150 watt, the larger the bulb the further back from the wall the machine can be placed, resulting in a larger picture.

The above model can also be had for Dry Cell Batteries. Be sure to specify the number and whether for Electric or Dry Cell. Electric models furnished unless otherwise specified. Batteries not furnished with dry cell machines.

**Weight** Packed each in a strong box complete, 10 lbs.

**Retail Price, \$10.00**

# KEYSTONE FURNISHED with MOVIEGRAPH— SAFETY FILM



U. S. Patents  
May 4, 1920  
July 6, 1920  
Apr. 4, 1922  
others pending

## No. 261 Electric equipped with 10 ft New Safety Film, Standard Gauge.

This machine is a beauty, it will unwind and rewind up to 200 feet of film. The rewind attachments are easy to assemble. Adjustable to any size electric lamp.

**Size of Machine** 6 $\frac{3}{4}$  in. x 10 $\frac{3}{4}$  in. x 13 $\frac{5}{8}$  in.

Exclusive of spools and arms illustrated.

**Equipment** Extra large lens tube, with lens adjusting mechanism, and three powerful lenses, including lens. Highly polished reflector. One Compartment Slide, U-Draw-Em Slide, three Colored Slides, 100 theatre tickets, generous supply of bill posters, officers' badges, also ticket takers' and operators' badges, ushers' arm bands and sheet of simple instructions.

**Construction** Steel. Leather pattern, baked crystalized enamel finish. Nickel trimmings. Adjuster for lens. With rubber tabs on bottom so that it will not scratch furniture. Has rewind pulleys. Polished fly wheel. Sprocket barrel with rollers, so that film will not come off or tear.

**Size of Picture** 60 in. x 72 in. Any ordinary Electric bulb can be used, the larger the bulb the further back from the wall the machine can be placed, resulting in a larger picture.

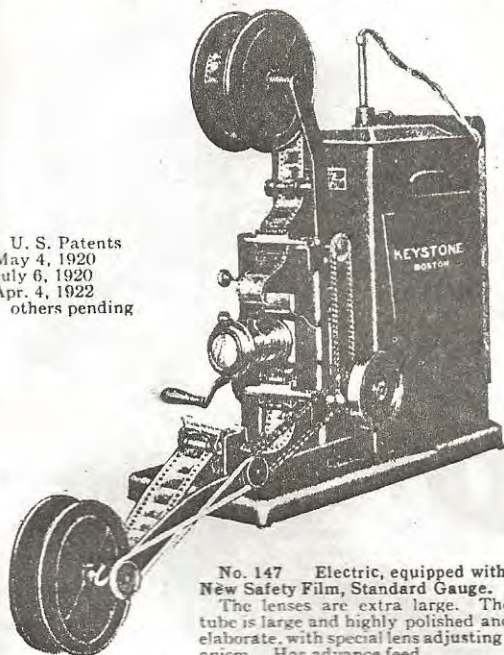
**Weight** Packed each in a strong box complete, 10 $\frac{1}{2}$  lbs.

**Retail Price, \$15.00**



# KEYSTONE EQUIPPED with MOVIEGRAPH — FILM CATALOG

U. S. Patents  
May 4, 1920  
July 6, 1920  
Apr. 4, 1922  
others pending



**No. 147** Electric, equipped with 10 ft. New Safety Film, Standard Gauge.

The lenses are extra large. The lens tube is large and highly polished and very elaborate, with special lens adjusting mechanism. Has advance feed.

**Size of Machine** 6¾ in. x 13¾ in. x 13¾ in.

Exclusive of spools and arms illustrated.

**Equipment** Three imported lenses, double convex and 2½-in. condensing lens. Highly polished reflector. One compartment slide, one U-Draw-Em slide, six colored slides, one hundred theatre tickets, generous supply of bill posters, officer's badge, ticket takers' and operators' badges, ushers' arm bands and simple directions.

**Construction** Steel. Leather pattern baked crystalized enamel finish, Nickel trimmings, adjuster for lens, wooden base with rubber tabs on the bottom so that it will not scratch the furniture. Has advance feed and rewind pulleys. Polished fly wheel. Sprocket barrel with rollers so that film will not come off or tear.

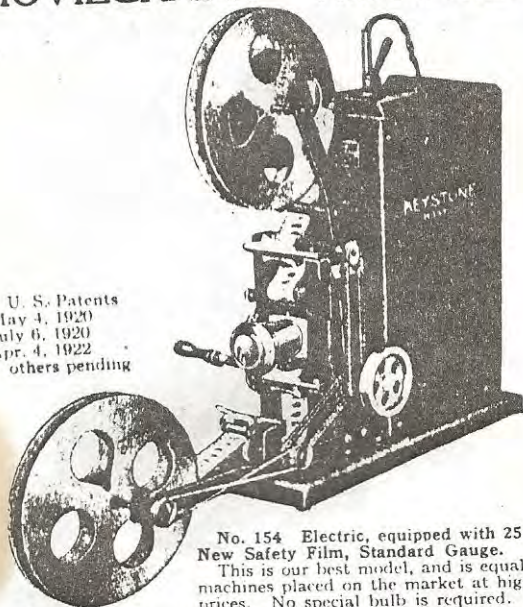
**Size of Picture** 84 inches x 96 inches. Any ordinary Electric bulb can be used, the larger the bulb and the further back from the wall the machine is placed the larger the picture.

**Weight** Packed each in a strong box complete, 10½ lbs.

**Retail Price, \$20.00**

# KEYSTONE Can Show Favorite MOVIEGRAPH -- Actors at Home

U. S. Patents  
May 4, 1920  
July 6, 1920  
Apr. 4, 1922  
others pending



**No. 154 Electric, equipped with 25 ft. New Safety Film, Standard Gauge.**

This is our best model, and is equal to machines placed on the market at higher prices. No special bulb is required.

This machine is equipped with three sprocket barrels, an advance sprocket, a driving sprocket, and also a take-up sprocket, releasing all tension of the film. The lenses are extra large and are adjustable.

The reel arms are a stationary part of the machine and need not be assembled. All parts are highly polished.

**Size of Machine** 6 $\frac{3}{4}$  in. x 13 $\frac{3}{4}$  in. x 14 $\frac{5}{8}$  in.

Exclusive of spools and arms illustrated.

**Equipment** Three high power French lenses, double convex, and 2 $\frac{1}{2}$ -in. condensing lens. Adjustable, highly polished reflector. One compartment slide, six colored slides, one U-Draw Em slide. One hundred theatre tickets, generous supply of bill posters, officer's badge, ticket takers' and operators' badges, ushers' arm bands and simplified directions.

**Construction** Steel. Leather pattern baked crystalized enamel finish, geared adjuster for lens, rubber tabs on the bottom so that it will not scratch the furniture. Has advance feed and rewind pulleys. Polished fly wheel. Sprocket barrel with rollers so that film will not come off or tear.

**Size of Picture** 84 inches x 96 inches. Any ordinary Electric bulb can be used, the larger the bulb the further back from the wall the machine can be placed, resulting in a larger picture.

**Weight** Packed each in a strong box complete, 12 lbs.

**Retail Price, \$25.00**

## KEYSTONE KOMEDIES

### Standard Gauge NEW NON-INFLAMMABLE FILM

This film is Non-Inflammable. These films are especially printed in our own Film Laboratories for the **Keystone Movie-graph**. Each of the films on this page is brand new. Just as much action is crowded in each length as is possible to print. Each subject is definite and complete. This is standard Gauge Film 1 3/4 inches wide.

### 10-FOOT LENGTHS-- SAFETY FILMS 90c EACH

- 305 Charlie Chaplin--Up and Down Stairs
- 306 Charlie Chaplin--Trouble with Waiter
- 307 Charlie Chaplin--Charlie as the Maid
- 450 Jackie Coogan--Feeding the Pig
- 451 Jackie Coogan--Fun in the Barn
- 337 Ben Turpin--The Dog Catcher
- 338 Wm. S. Hart--The Gambler's Den
- 339 Wm. S. Hart--Charging the Enemy
- 349 Tom Mix--The Attack
- 350 Tom Mix--Following the Trail
- 351 Tom Mix--The Rustlers
- 359 Comedy--Fatty the Golfer
- 801 Gump Comedies--Sandy with the Stage Manager
- 802 Gump Comedies--Sandy and His Mother-in-Law

### 25-FOOT --SAFETY FILMS \$2.00 PER REEL

- 362 Charlie Chaplin--Caught with the Goods
- 363 Charlie Chaplin--Working the Trap
- 364 Charlie Chaplin--On the Fire Engine
- 408 Douglas Fairbanks--Fighting Against Odds
- 373 Wm. S. Hart--Himself
- 374 Wm. S. Hart--A Western Fight
- 377 Tom Mix--The Roundup
- 378 Tom Mix--Wounded
- 464 Jackie Coogan--Taking a Bath
- 465 Jackie Coogan--Milking the Cow
- 825 Gump Comedies--Sandy as an Actor

### 50-FOOT--SAFETY FILMS \$4.00 PER REEL

- 379 Charlie Chaplin--Getting His Goat
- 380 Charlie Chaplin--Thirsty Charlie
- 409 Douglas Fairbanks--Fun in a Barber Shop
- 410 Douglas Fairbanks--Morning Exercise
- 383 Wm. S. Hart--Fighting the Outlaws
- 384 Wm. S. Hart--Chased by the Indians
- 469 Jackie Coogan--Helping the Cook
- 403 Tom Mix--In the Movies
- 830 Gump Comedies--Sandy as a Model Husband

### 100-FOOT--SAFETY FILMS \$8.00 PER REEL

- 389 Charlie Chaplin--Free Samples at the Drug Store
- 390 Charlie Chaplin--The Fireman
- 394 Wm. S. Hart--Rescuing the Girl
- 472 Jackie Coogan--Making Spaghetti
- 396 Tom Mix--Breaking Out of Jail
- 406 Tom Mix--A Thrilling Moment
- 411 Douglas Fairbanks--A Struggle for Life
- 840 Gump Comedies--Sandy in a Turkey Chase

**WRITE FOR A COMPLETE CATALOGUE**



# KEYSTONE

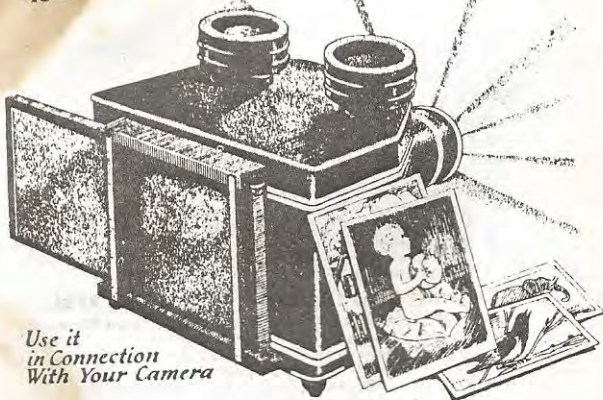


*Color Post-Cards  
Snap Shots Abroad  
Bible Pictures  
Scenic Views*



*Vacation Snap Shots  
Old Time Pictures  
Family Groups  
Babies*

*Retail  
\$5<sup>00</sup>  
\$10<sup>00</sup>  
\$15<sup>00</sup>*



*Use it  
in Connection  
With Your Camera*



# KEYSTONE



*Daily Newspaper Comics  
Sunday Color Comics  
Valentines  
Cartoons  
Songs*

*Machines  
Road Maps  
Commercial Work*

*Birds  
Flowers  
Famous People  
Scenes  
and Enlargements*

*Shadows  
Guessing Games  
Illustrated Songs  
Story Book Pictures*

## KEYSTONE RADIOPTICAN

MADE IN BOSTON, U.S.A.

*Entertaining-Educational  
Any Picture  
Any Color*

*Any Time or Anywhere  
there is an Electric Socket*



# KEYSTONE



No. 401—RADIO-JUNIOR

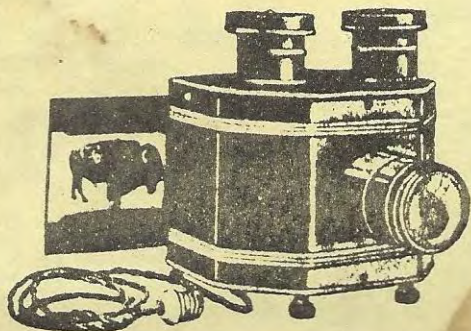
Price, \$5.00

EQUIPPED with 3-inch double convex ground and polished lens, two ventilators to keep the housing cool, electric cord plug, sockets for two bulbs and with reflectors inside body. It is strikingly finished in baked green crystal enamel.

Size Length 9½ in., width 9 in., height 11 in.



# KEYSTONE



No. 421 -RADIOPTICAN

Price, \$10.00

**B**ECAUSE of its superior lenses, illuminants and reflectors this model yields a sharper and brighter picture.

**Lens System** Double Plano-Convex Lens System covering sharply pictures.

**Illumination** Fitted with large parabolic reflectors and 6 ft. of cord for attaching to any electric light fixture.

**Picture Holders** Two holders for standard post cards, etc. are mounted on detachable sliding backs (patented) eliminating delay between subjects and preventing light being let into room when loading.

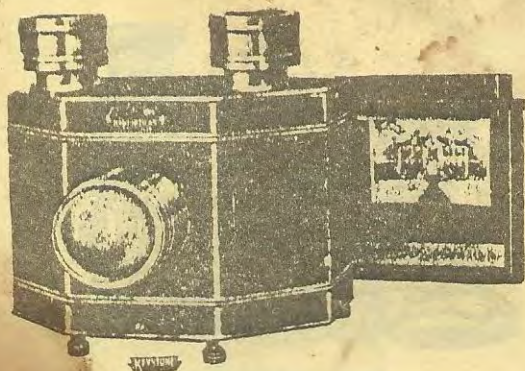
**Cooling Arrangements** Thoroughly ventilated and protected with air spaces.

**Finish** Highly crystalized baked black finish.

**Size** Length, 11 in.; width,  $11\frac{3}{4}$  in.; height,  $11\frac{3}{4}$  in.



# KEYSTONE



No. 431—RADIOPTICON

Retail Price, \$15.00

**T**HE illumination in this model is double that of No. 421 and it has the distinct advantage of a sliding carrier and detachable backs, patented adjustable picture holders and minor refinements such as light-tight ventilators.

**Lens System** Double Plano-Convex Lens System covering prints and photographs up to  $6\frac{1}{2} \times 5\frac{1}{2}$  inches.

**Illumination** Extra large parabolic reflectors and 6 ft. of cord for attaching to any electric light fixture.

**Picture Holders** Two patented, adjustable holders mounted on metal plates which drop into a double-sliding carrier, provide a picture changing system identical with the established standard of all high grade stereopticons. The adjustable holders receive pictures up to  $6\frac{1}{2} \times 5\frac{1}{2}$  inches either vertical or horizontal.

**Cooling Arrangements** Thoroughly ventilated and provided with air spaces.

**Finish** Highly crystalized baked black finish.