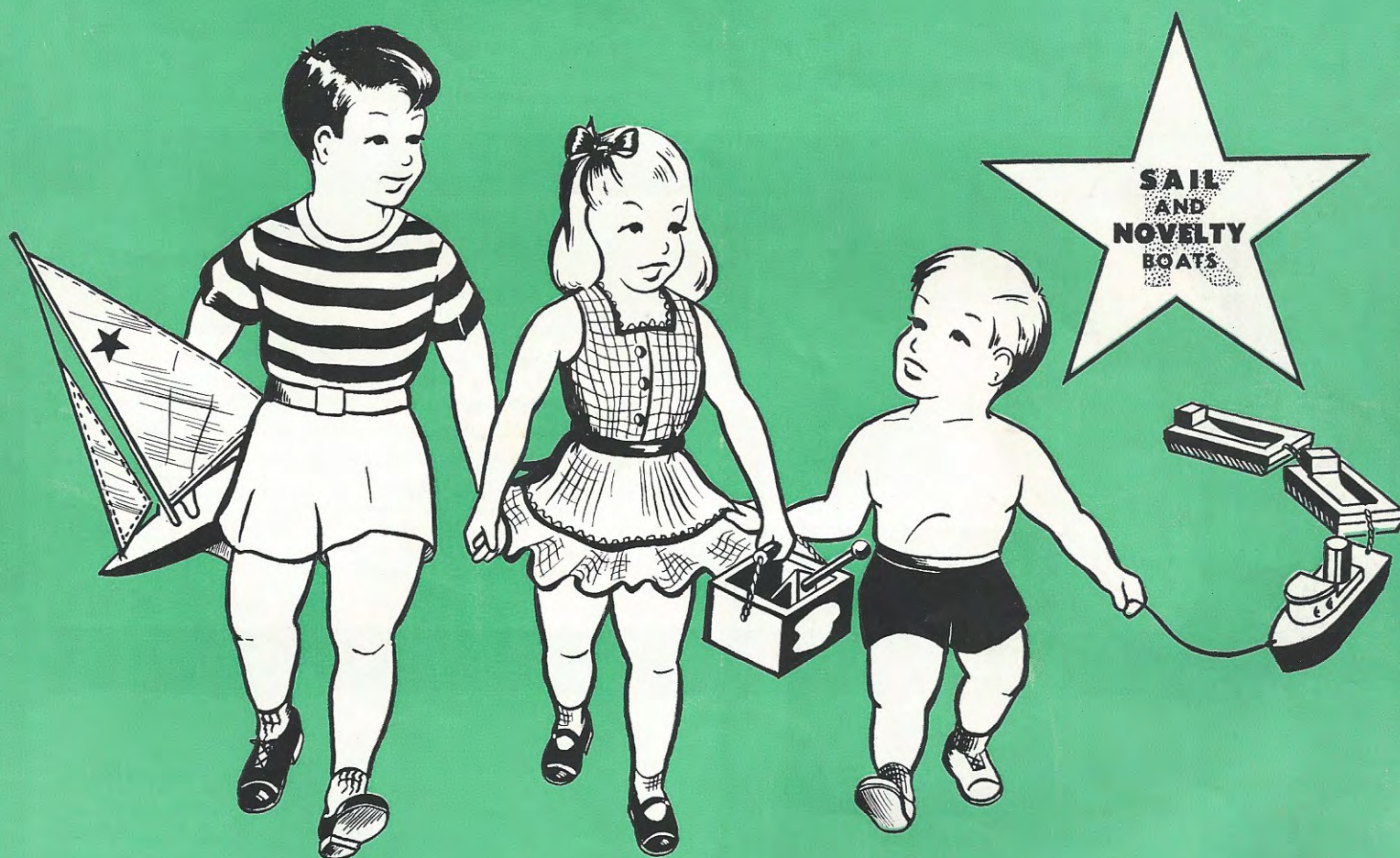


KEY *toys for Spring* **1956**

KEYSTONE BOATS



FOR ALL AGES

KEYSTONE WOOD TOYS, INC. • 143 HALLET STREET • BOSTON 24, MASS.

NEW YORK SHOWROOM • 200 FIFTH AVENUE • ROOM 442
CHICAGO SHOWROOM • MERCHANDISE MART • ROOM 1434
LOS ANGELES SHOWROOM • 656 SOUTH LOS ANGELES STREET

Address all correspondence to Boston

KEYSTONE QUALITY BOATS

No. 623 SAILBOAT

Steel Keel with Steel Ballast
Vinyl Sail with Reinforced Corners

A trim 12" model equipped with steel keel and ballast with real stability for sailing in pool, tub or open water. Finished in red hull, yellow keel, decorated sail. Individually wrapped packed 3 dozen per carton. Weight 8½ pounds per dozen.

No. 621 SAILBOAT

Steel Keel
Vinyl Sail with Reinforced Corners

A 9" sailboat finished in white hull, yellow keel, rigged with decorated sail, mast, steel keel for better sailing. A colorful little model that will actually sail in wading pool, tub or open water. Packed individually wrapped 6 dozen per carton. Weight 3½ pounds per dozen.

GUARANTEED TO SAIL

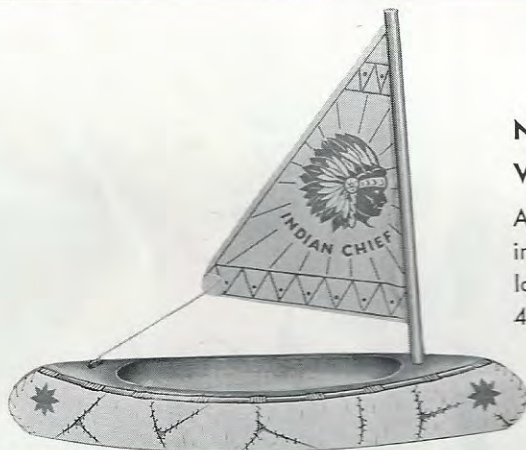


Model Nos.
621 - 623

No. 622 CANOE

Vinyl Sail with Reinforced Corners

A flat bottom canoe 8" long, finished in natural stained interior, birch bark exterior, decorated sail. Really looks like a birch bark canoe. Individually wrapped 4 dozen per carton. Weight 3 pounds per dozen.



No. 624 SAILBOAT

Steel Keel with Ballast
Vinyl Sails with Reinforced Corners

A beautiful 14" sloop finished in blue hull and ivory deck, equipped with two sails, two-piece mast, boom, steel keel with ballast, decorated sail encased in boom for better sailing. A practical sailing model for any age. Mast fittings made of high impact plastic. Packed individually boxed one dozen per carton. Weight 14 pounds per dozen.



WORLD'S LARGEST MANUFACTURERS OF TOY B O A T S

No. 625 SAILBOAT

Steel Keel with Ballast
Vinyl Sails with Reinforced Corners

Overall length 18". Finished in natural decorated deck, red hull, white keel. Fitted with three sails, real yachting wheel, rudder, two-piece mast with spreader, side pennants, bowsprit, sail encased in boom for better sailing. Beautifully formed hull fitted with tall mast and large sail area for sailing and racing in open water. All fittings made of high impact plastic. Individually boxed one dozen per carton. Weight 22 pounds per dozen.

Model Nos.
625 - 626
627

No. 626 SAILBOAT

Steel Keel with Ballast
Vinyl Sails with Reinforced Corners

Overall length 20". Finished in natural decorated deck, green hull, orange keel. Fitted with three sails, real yachting wheel, rudder, two-piece mast with spreader, side pennants, bowsprit, sail encased in boom for better sailing. Beautifully formed hull fitted with tall mast and large sail area for sailing and racing in open water. All fittings made of high impact plastic. Individually boxed one dozen per carton. Weight 30 pounds per dozen.

No. 627 SAILBOAT

Steel Keel with Ballast
Vinyl Sails with Reinforced Corners

Overall length 22". Finished in natural decorated deck, white hull, green keel. Fitted with three sails, real yachting wheel, rudder, two-piece mast with spreader, side pennants, bowsprit, sail encased in boom for better sailing. Beautifully formed hull fitted with tall mast and large sail area for sailing and racing in open water. All fittings made of high impact plastic. Individually boxed one dozen per carton. Weight 32 pounds per dozen.

GUARANTEED TO SAIL



No. 628 SAILBOAT

Steel Keel with Ballast
Vinyl Sails with Reinforced Corners

Overall length 24". Finished in natural decorated deck, white hull, red keel. Fitted with three sails, real yachting wheel, rudder, cabin, two-piece mast with spreader rising 32" above deck, bowsprit, side pennants, sail encased in boom for better sailing. A real racing model for older sailors, which any youngster would be pleased to own. Packed individually boxed 1/2 dozen per carton. Weight 43 pounds per dozen.

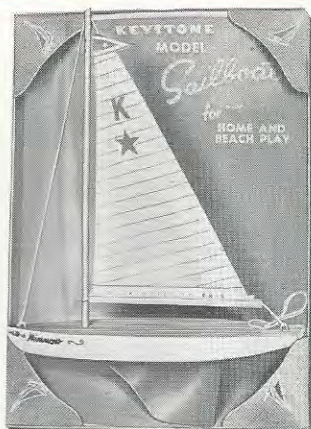
GUARANTEED TO SAIL



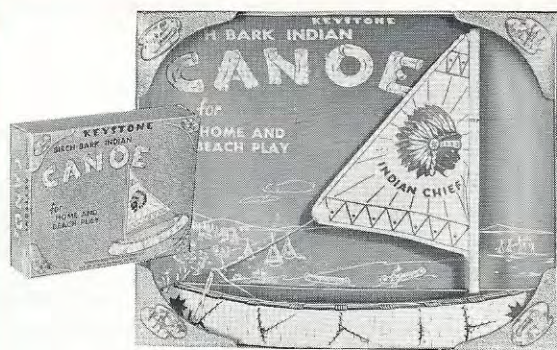
KEYSTONE QUALITY BOATS



**No. 631
SAILBOAT
with
Display Box**

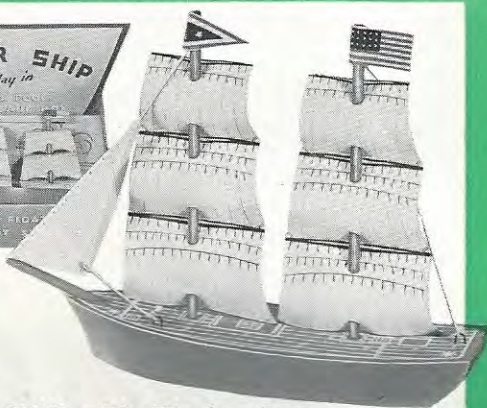


Length 9". Single decorated sail with boom, mast, pennant and colored steel keel. Finished in white hull with name transfer, natural scored deck. **GUARANTEED TO SAIL.** Completely assembled in a self-display box with easel back. Packed 3 dozen per carton. Weight per dozen, 5½ pounds.



No. 633 CANOE with Display Box

Length 10". Decorated single sail with reinforced corners and mast. Finished in natural stained interior, colorful birch bark exterior. Completely assembled in a self-display box with easel back. Packed 3 dozen per carton. Weight per dozen, 7 pounds.



**No. 644
CLIPPER SHIP with Display Box**

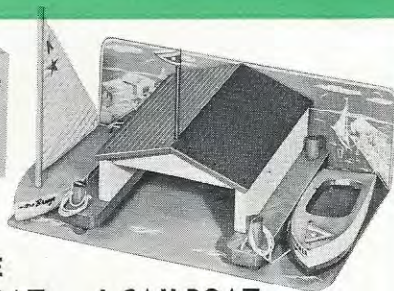
A 9" clipper ship rigged with bow sprit, fore mast and main mast, with jib and full courses of square sail. Finished in blue hull, natural decorated deck, with flag. Shipped completely set up in decorated box with easel back. Packed 3 dozen per carton. Weight per dozen, 7 pounds.



**No. 645
VIKING SHIP
with
Display
Box**

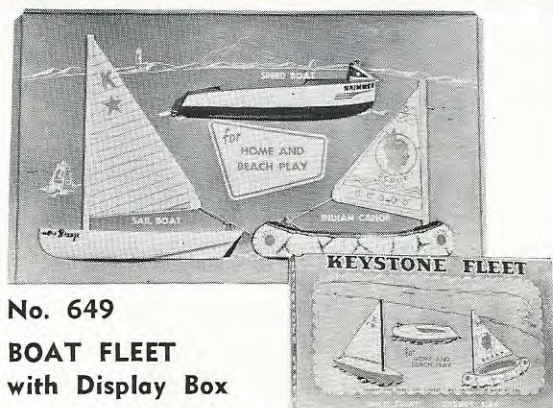


Length 11", with flat bottom and open cockpit. Equipped with decorated square sail with sea serpent design, mast, and decorated bow sprit. Finished in natural hull with colorfully decorated shields. Packed individually in decorated box, 1 dozen per carton. Weight per dozen, 7 pounds.



**No. 648
BOAT HOUSE
with SPEEDBOAT and SAILBOAT**

All wood boat house with landing deck and piers, 8" x 8½". Included are 8" sailboat and 8" motor boat. Dock and pier finished in natural wood, and boat house finished in white with green roof. Motor boat has white sides, name transfer, natural deck, red water line and cockpit. Sailboat hull finished in yellow sides with name transfer and natural deck. Pennant on motor boat and boat house. Packed all assembled to decorated display panel, one to decorated box, ½ dozen per carton. Weight per dozen, 27 pounds.



**No. 649
BOAT FLEET
with Display Box**

A Keystone boat fleet consisting of one 8" colorfully decorated birch bark canoe with decorated sail, one 8" yellow catboat with decorated sail, and one 8" two tone motor boat with pennant. All assembled and mounted on decorated display card. Packed 1 dozen per carton. Weight per dozen, 7½ pounds.

WORLD'S LARGEST MANUFACTURERS OF TOY BOATS

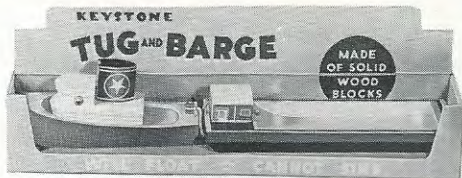
No. 354

FERRY BOAT

Wood Cars — Trailer Truck — Hinged Metal Ramps
An Excellent Toy for Wading Pools, Floor or Table



Length 12". Equipped with cabin, bridge, stack, double side lights, folding metal ramps, two colored wood cars and trailer truck. Perfect toy for wading pools. Individual display box. Packed one dozen per carton. Weight 19 pounds per dozen.

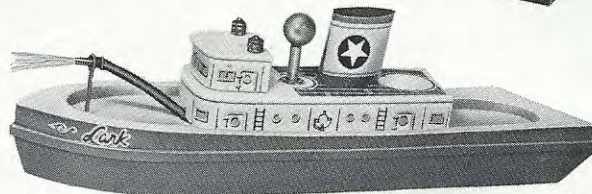


No. 646 TUG and BARGE

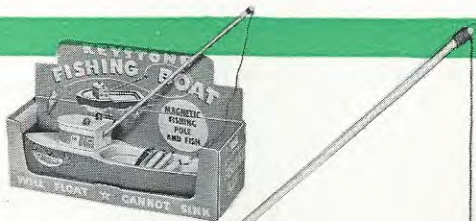
7½" open barge with deck house colorfully decorated. Overall length 13½". Tug fitted with cabin, bridge, and smoke stack. Finished in blue, white and yellow. Tug and barge attached by heavy string fastened to bits. Packed in decorated box, 2 dozen to master carton. Weight per dozen, 7¼ pounds.

No. 353 FIREBOAT

With Pump and Nozzle
Real Plunger Pump
Shoots Water from
Reservoir in Hull
Will Float



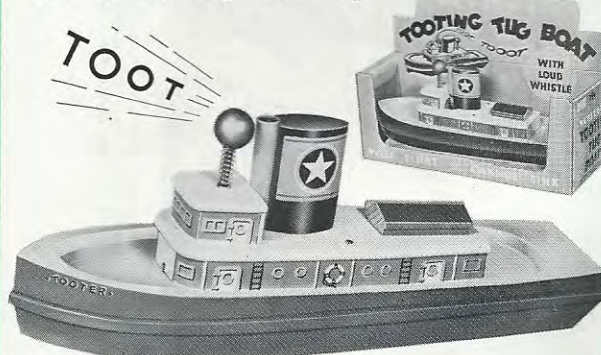
12" fireboat finished in three colors. Equipped with cabin, bridge, stack and working water pump with nozzle. Individual display box. Packed one dozen per carton. Weight 12 pounds per dozen.



No. 351 MAGNETIC FISHING BOAT

Length 10". Finished in blue hull, yellow deck, white cabin. Equipped with open cockpit, cabin, side lights, colorful wooden fish, fish pole with magnetic hook. A real little action toy for play in tub, pool, floor or beach. Packed in individual display boxes, one dozen per carton. Weight 10 pounds per dozen.

No. 359 TOOTING TUG BOAT With Spring Action Tooting Whistle Floor or Wading Pool Toy

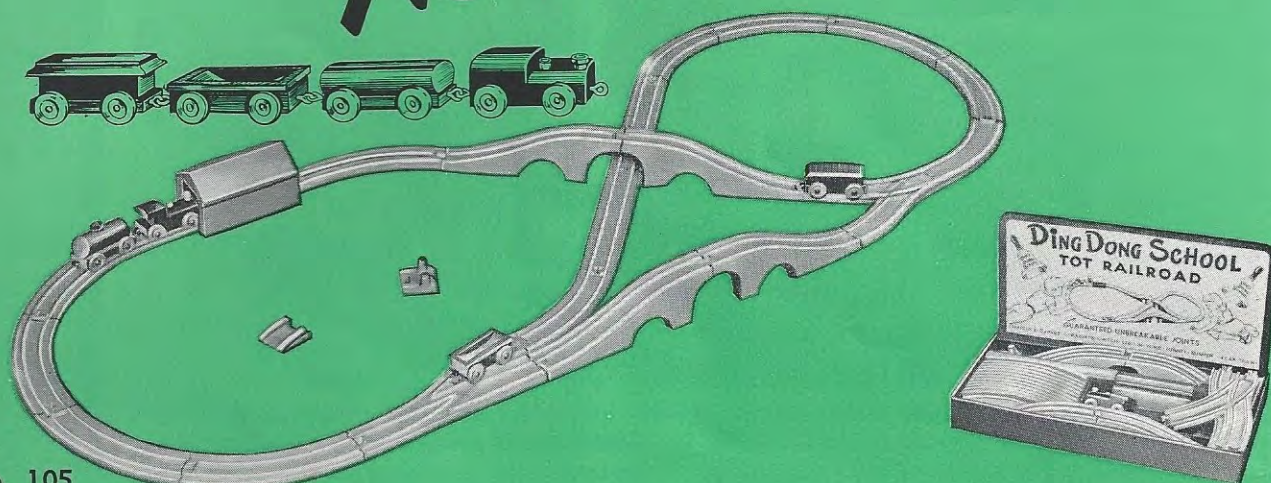


Length 10". Equipped with cabin, bridge, stack, skylight, and tooting whistle. Finished in three colors. For use as a floor toy, or in wading pool. Individual display box. Packed one dozen per carton. Weight 12 pounds per dozen.



KEYSTONE

Activity Toys



No. 105

DING DONG SCHOOL TOT TRAIN SET

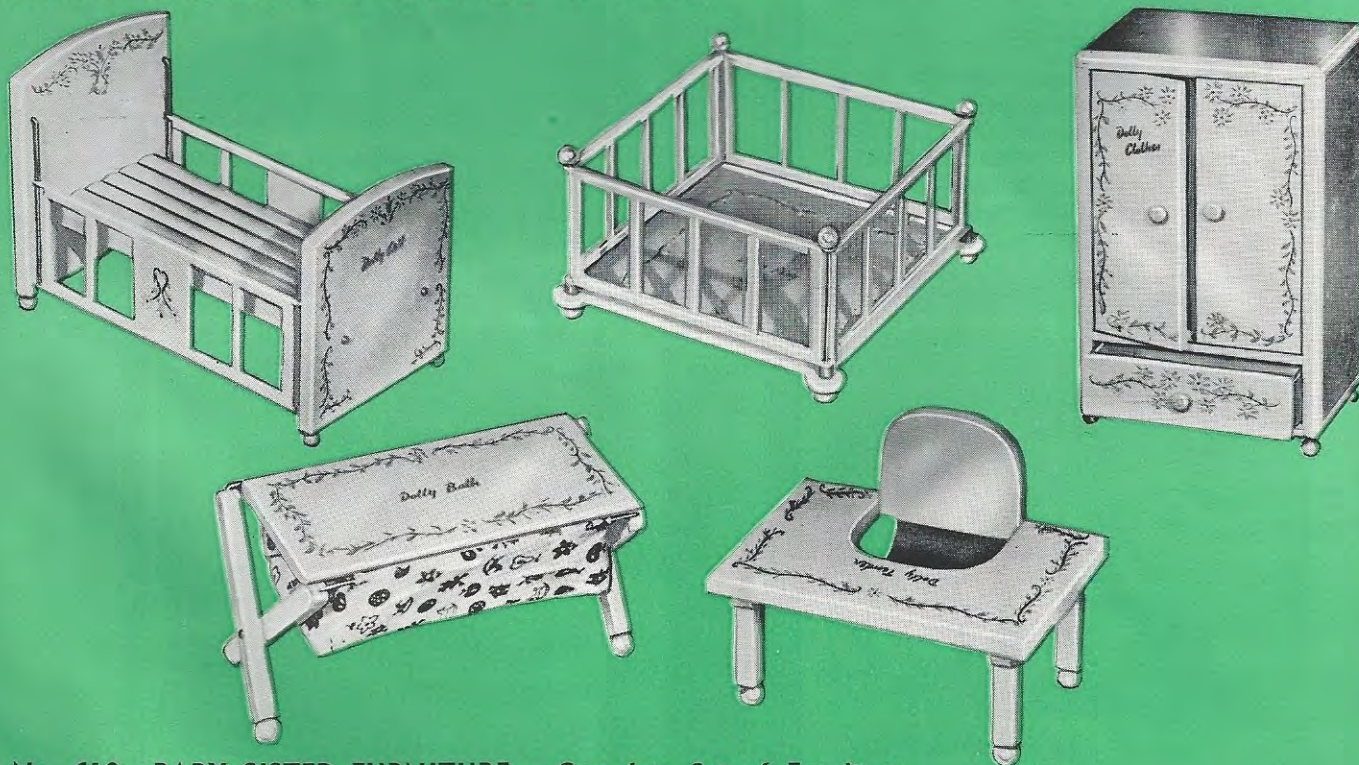
Set consists of 141 inches of guaranteed track — 11 curves, 3 straights, 1 switch, 2 complete bridges, 1 yoke, 1 "lead in" section, 1 bumper, 1 three-piece wood tunnel, and a colored four-car hardwood train. Packed in illustrated set up box with COUNTER DISPLAY CARD. ½ dozen per carton. Weight 13 lbs. per carton.

No. 421 ADVANCED TOT TRAIN SET

Set consists of 207 inches of guaranteed track — 16 curves, 4 straights, 1 switch, 3 complete bridges, 1 yoke, 1 "lead in" section, 1 bumper, 2 colored four-car hardwood trains, wood blocks for two level system, wood station, and three-piece wood tunnel. Packed in illustrated set up box with COUNTER DISPLAY CARD. ¼ dozen per carton. Weight 8 lbs. per carton.

No. 415 REGULAR TOT TRAIN SET Same as No. 105 without tunnel.

No. 406 BEGINNER TOT TRAIN SET 88" of track.



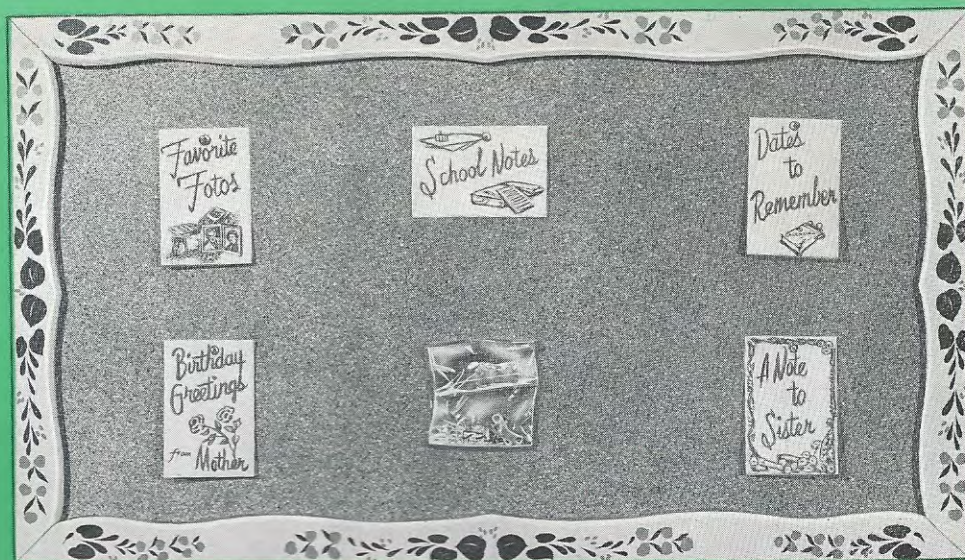
No. 610 BABY SISTER FURNITURE - Complete Set of Furniture

A complete set of all wood nursery furniture, each piece large enough to fit 8" baby doll. All finished in off white and decorated in beautiful matching three color design in pink and blue. Large wardrobe 10" high, fitted with swinging doors, drawer, rod and clothes hangers. Play pen 7½" x 7½", drop side crib 7" x 9½", watertight bathinette and table chair 4¾" x 6½". Packed in decorated counter display box, three per carton. Weight 16 pounds per carton.

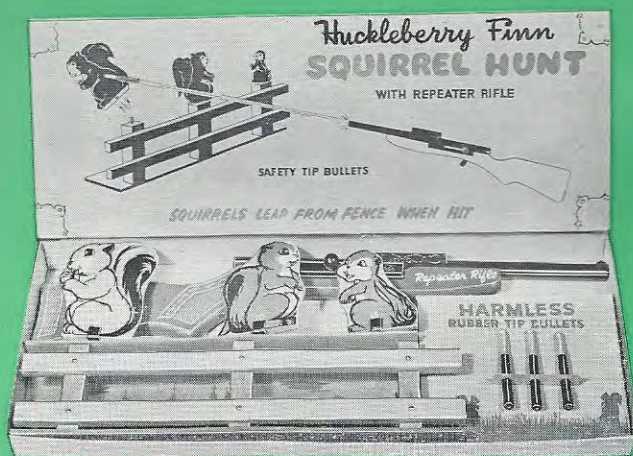
No. 257

**PIN-UP
BULLETIN BOARD**

For Home — School —
Office
Complete With Hardware



Cork faced pin-up bulletin board approximately 31½" x 18¼" with all wood frame in scroll pattern. Finished in oyster white and 3-color Pennsylvania Dutch design. Equipped with wall hangers, hooks, thumb tacks in display envelope and "pinned on cards" for display purposes. A "wanted" and most useful item for boys and girls of all ages — eight through their school days. Packed each in corrugated box, six per carton. Weight 39 pounds per carton.



No. 828 SQUIRREL HUNT

A safe shooting game with exciting new action. Three different size all wood squirrels are snapped into position on an all wood fence. Each size target is numbered for scoring. Equipped with repeater rifle and harmless safety rubber tipped bullets. When hit each squirrel jumps, giving the thrill of a real good shot. Packed in a large multi-colored wood grain set up box with illustrated inserts and display panels. Box size 8" x 24". Shipped one dozen per carton. Weight 25 pounds per dozen.

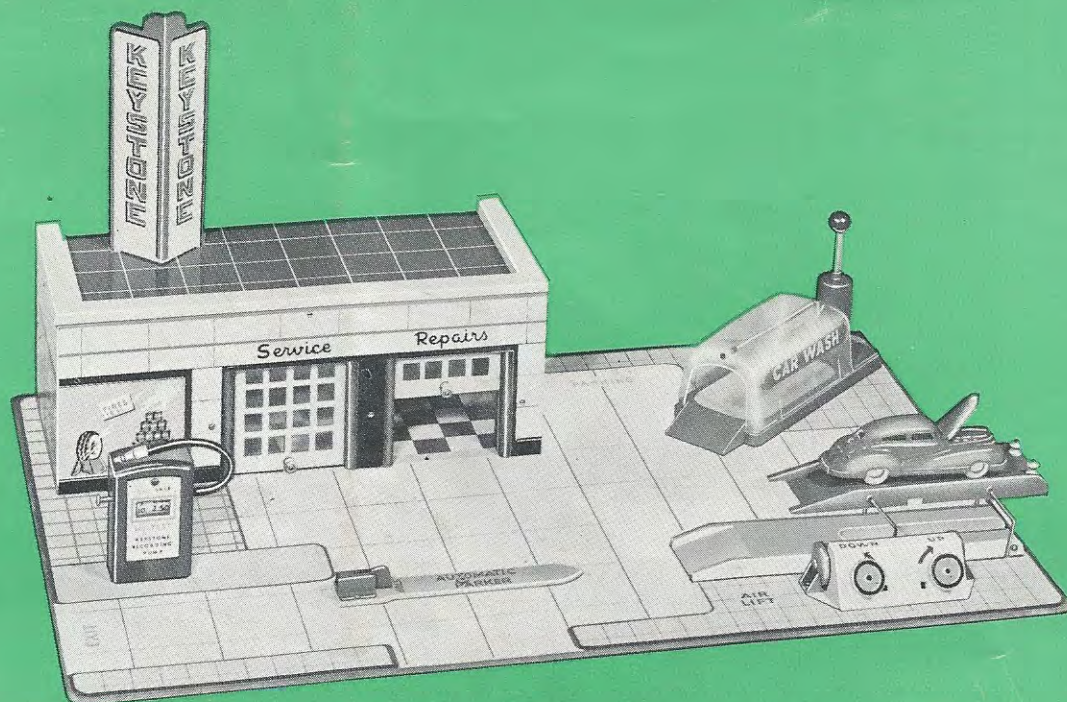


No. 230 SNAP BUTTON TRUCK SET

Makes Three Complete Toys — A Snap to Put Together — A Snap to Take Apart
Snap Parts Are Small Enough for Small Hands — Sturdy All-Wood Truck Set

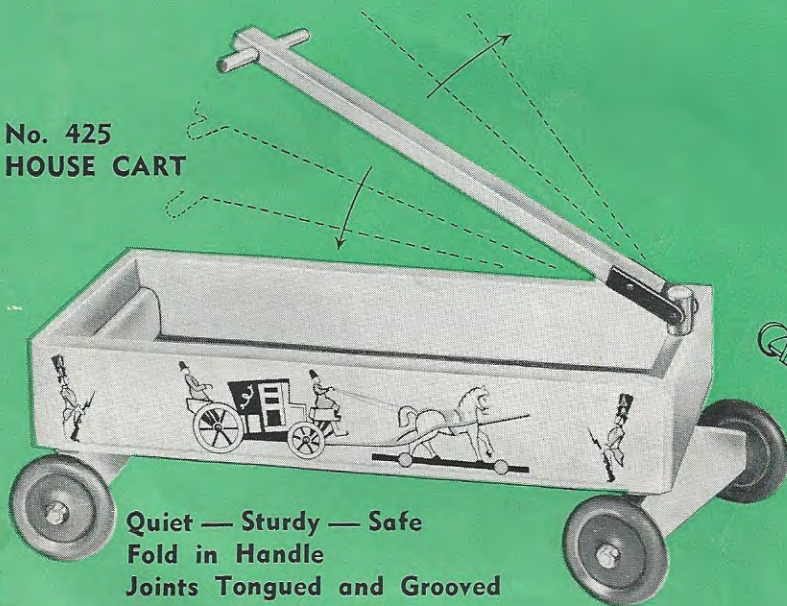
A 12" snap button truck assembly set consisting of cab, cab chassis, trailer body, trailer chassis and six "snap on" rolling wheels. All solid wood parts with hollow body finished in natural and decorated with decalcomanias. A "snap" assembly for three complete toys, cab unit, platform trailer truck and caravan body trailer truck. A large, sturdy all-wood truck set with rubber wheels, built to satisfy the little tots "take apart and put together" interest without using small easily lost parts, difficult for little hands. Packed in set up illustrated box with counter display panel, one dozen per carton. Weight 23½ pounds per carton.

No. 219
GAS STATION
 All New
 Rugged Construction



Brand new gas station on large platform base with every part a real play unit. A two door building with folding doors and plenty of room for car storage. New gas pump with recording dial operated by turning nozzle. A completely enclosed wash pit with real working pump and water spray. Can be used with or without water. A completely new type slow acting air lift sensitively controlled by valves for up and down motion. A parking device which parks car in any position on the base. Simply roll the car onto the platform, point and release. Car will roll into garage, into car wash, on to lubricating rack or into parking areas. Set includes easy rolling car with lifting hood. Finished in all new bright colors, equipped with all working parts. Shipped completely set up ready to use. Base size 16" x 24". Shipped each in a carton. Weight 5 pounds each.

No. 425
HOUSE CART



Quiet — Sturdy — Safe
Fold in Handle
Joints Tongued and Grooved
Designed to Prevent Damage
to Walls and Furniture

A sturdy all wood house cart with interlocking corners with full open body approximately 8" x 17". Finished in all natural and decorated in 3-color design on each side. Equipped with 3" diameter rubber wheels and full swivel draw handle fitting *inside* of body when not in use. Rear wheels located to prevent tipping and damaging walls or furniture when used inside. All corners rounded, eliminating all sharp edges. Front wheels swivel in complete circle for easy handling. Draw bar fits into body preventing tripping and breaking when not in use. A quiet, strong all wood cart built for inside play free from all hazards and damage. Packed each in corrugated carton ready for use. One per carton. Weight 5 pounds each.



No. 427
TOTS AUTO CAR

Sturdy All Wood — Rubber Wheels
Safe for Tots

All wood tots auto car with rubber wheels, finished natural with three color decoration. Overall height 17", length 18". A sturdy riding toy in a snappy design, equipped with large wood steering wheel comfortable for little hands. With a four position shifting lever for lots of action play. Safe to ride, and safe to use. Easily assembled with two bolts. Each in a shipping carton, 4 3/4 lbs. each.

